

GuzziDiag for Single Throttle Body V7

This guide assumes you have installed the GuzziDiag suite of programs and have the correct drivers installed for your operating system.

To read your existing map:

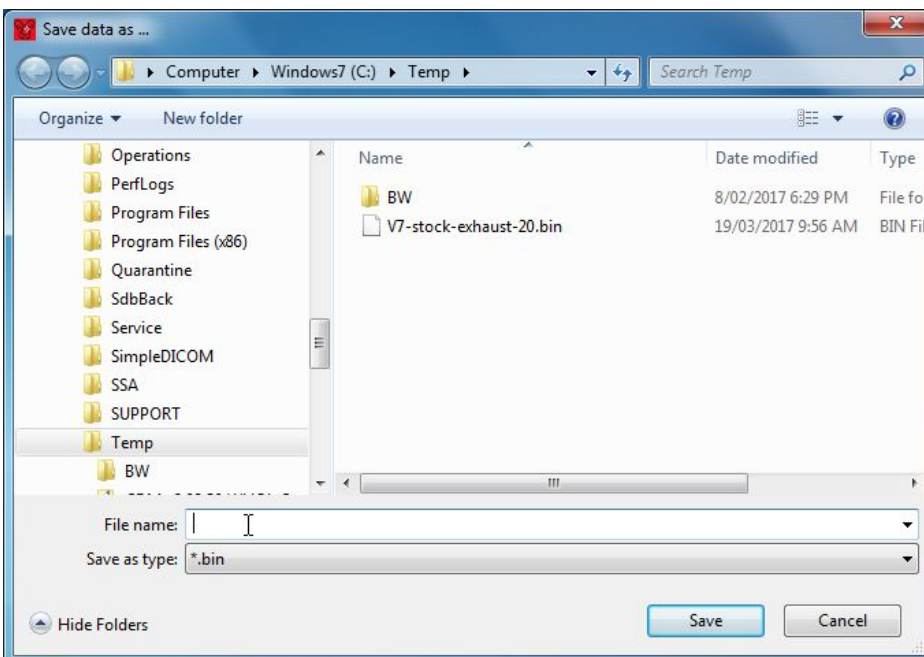
Connect the GuzziDiag cable to your Diagnostic port. Run the IAWMIUG3Reader program.



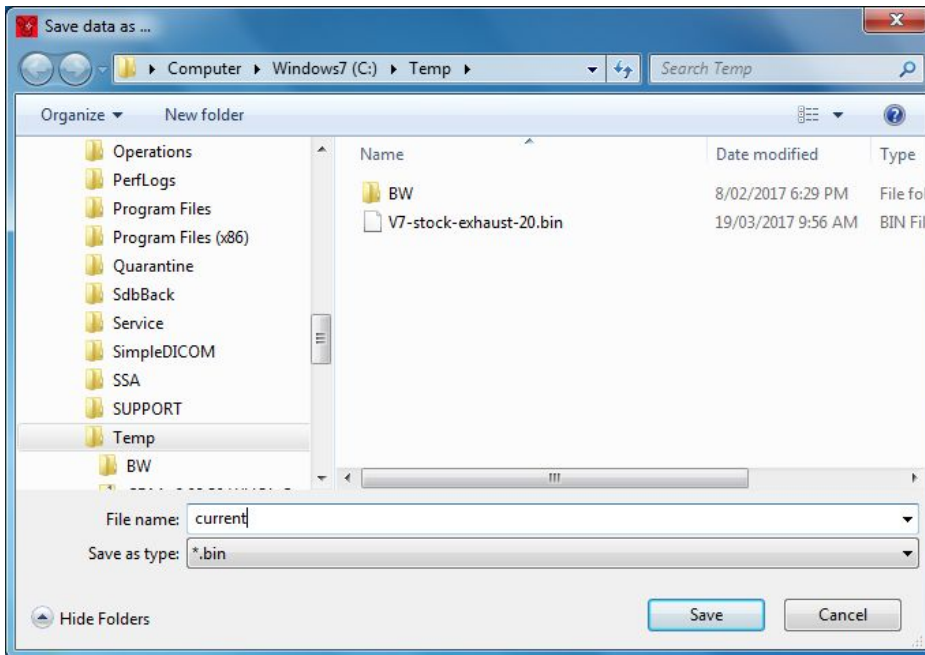
Ensure the correct COM port is selected. Your computer may have multiple COM ports.

Click 'Read'.

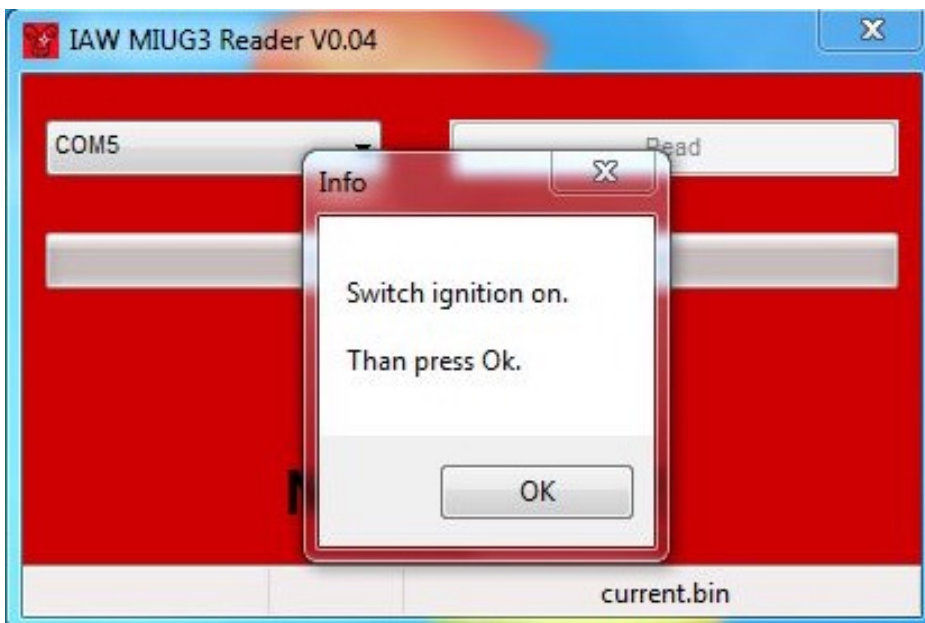
A browser window will open.



Here you can browse to the folder you wish to save the map in. Choose a name for your map. In this example, I have used 'current'. Click 'Save'



You will be prompted to switch the ignition key to 'on'. Do not start the engine. Click 'Ok'.



The map will be read from the ECU and saved. It takes about 15 minutes.



When the download is finished, switch off the ignition key then click 'Ok'



Writing a map.

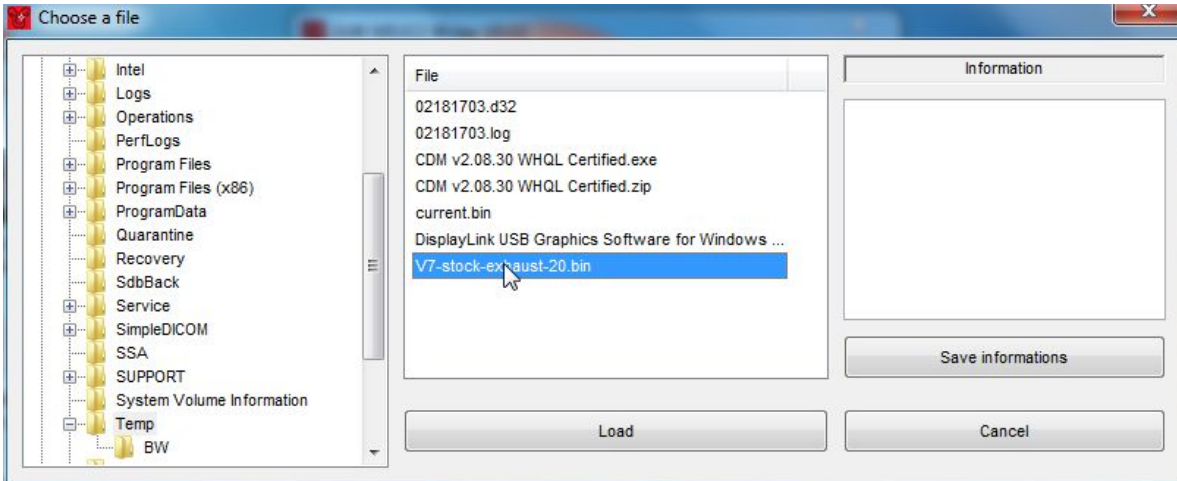
To write a new map to the ECU, run the IAWMIUG3Writer program.



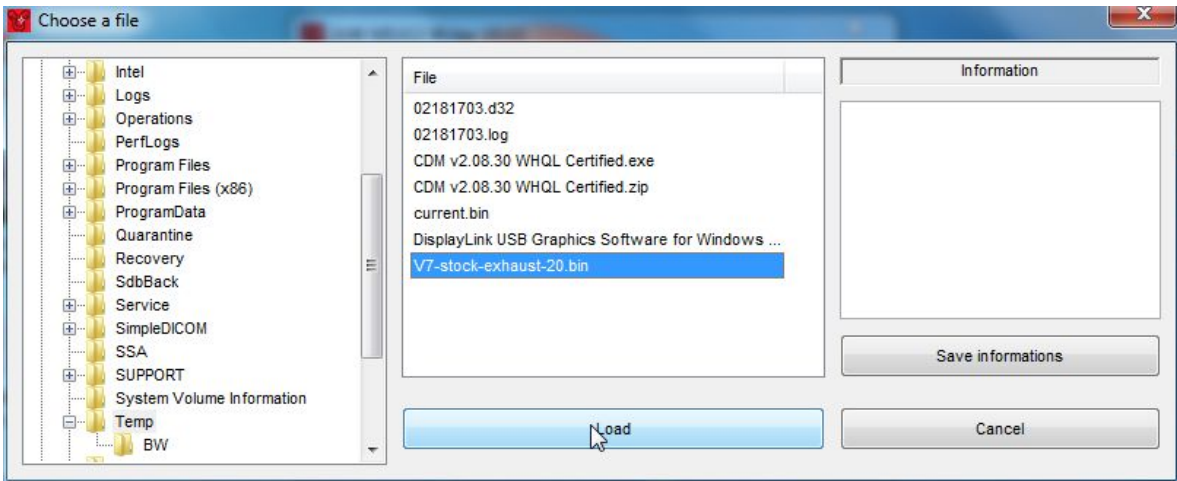
Click on the button with the three dots to browse to the map.



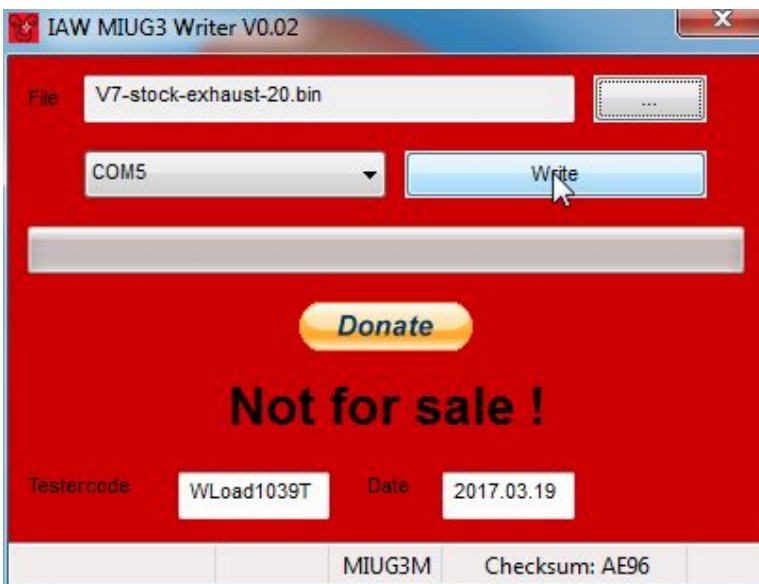
Select the map you wish to load.



Click 'Load'



Next, click 'Write'!

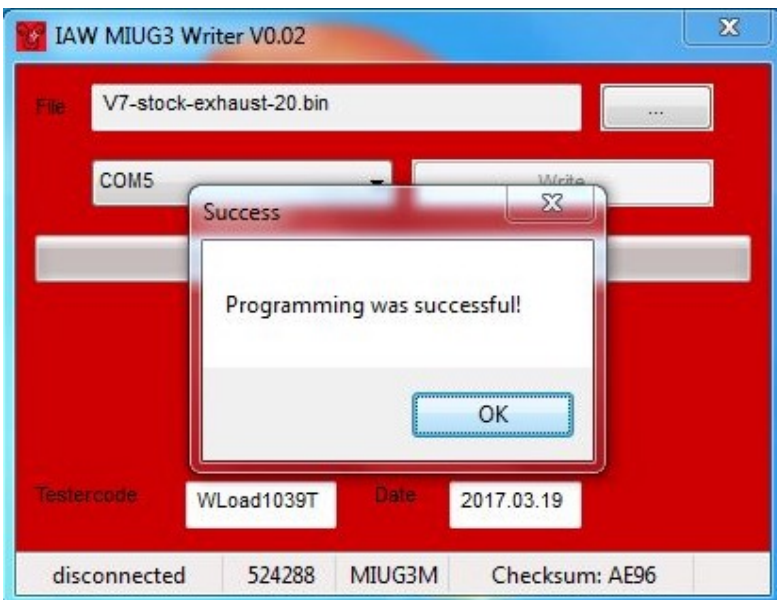


You will be asked to switch the ignition key to 'on'. Then click 'Ok'

The map will upload. It takes about 5 minutes.



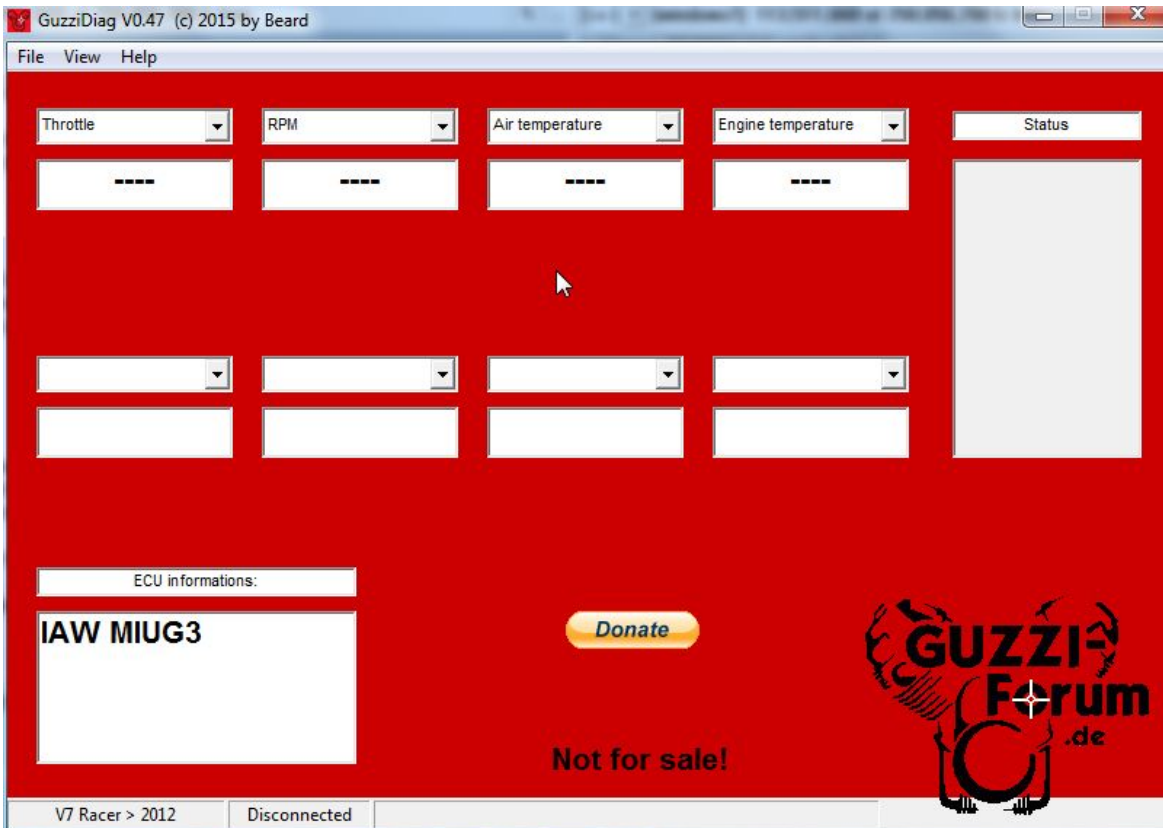
Once completed, it will tell you that programming was successful.



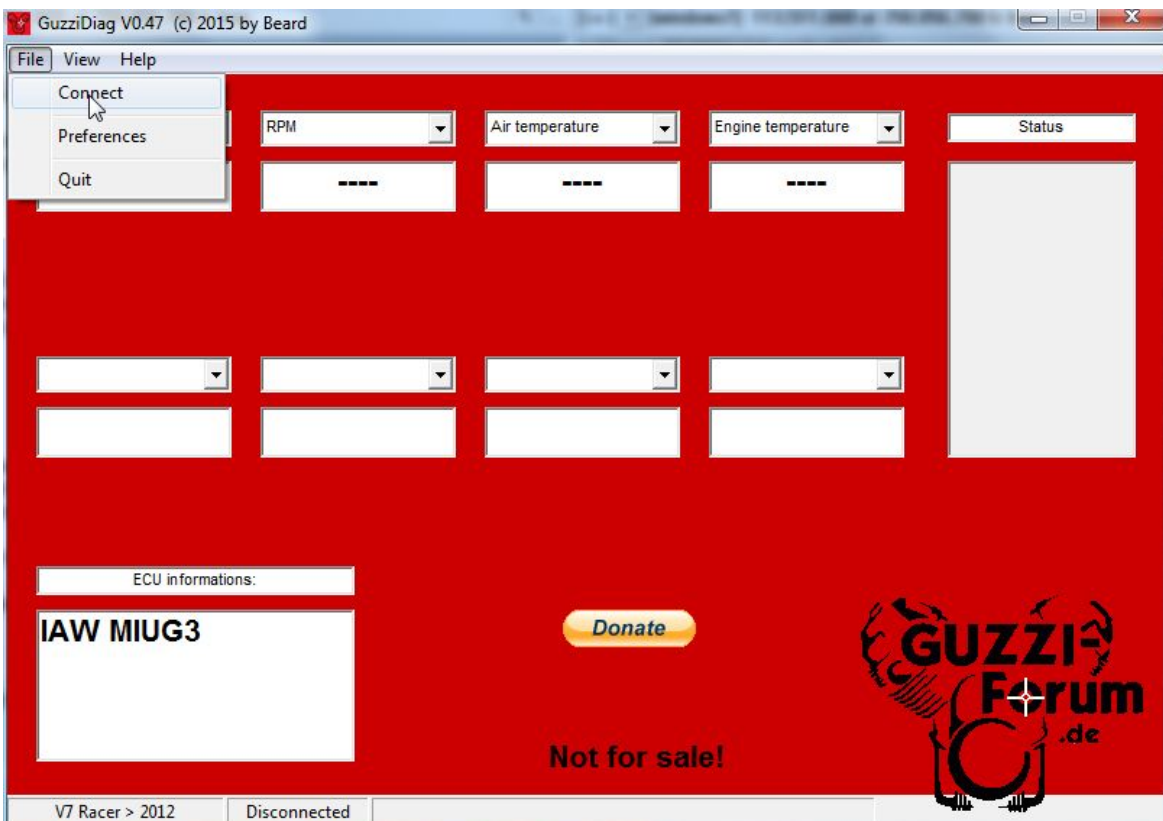
Click 'OK'. You will then be asked to switch off the ignition key.

After loading a map, we will now relearn the throttle. We will also reset the 'autolearning parameters' (fuel trims).

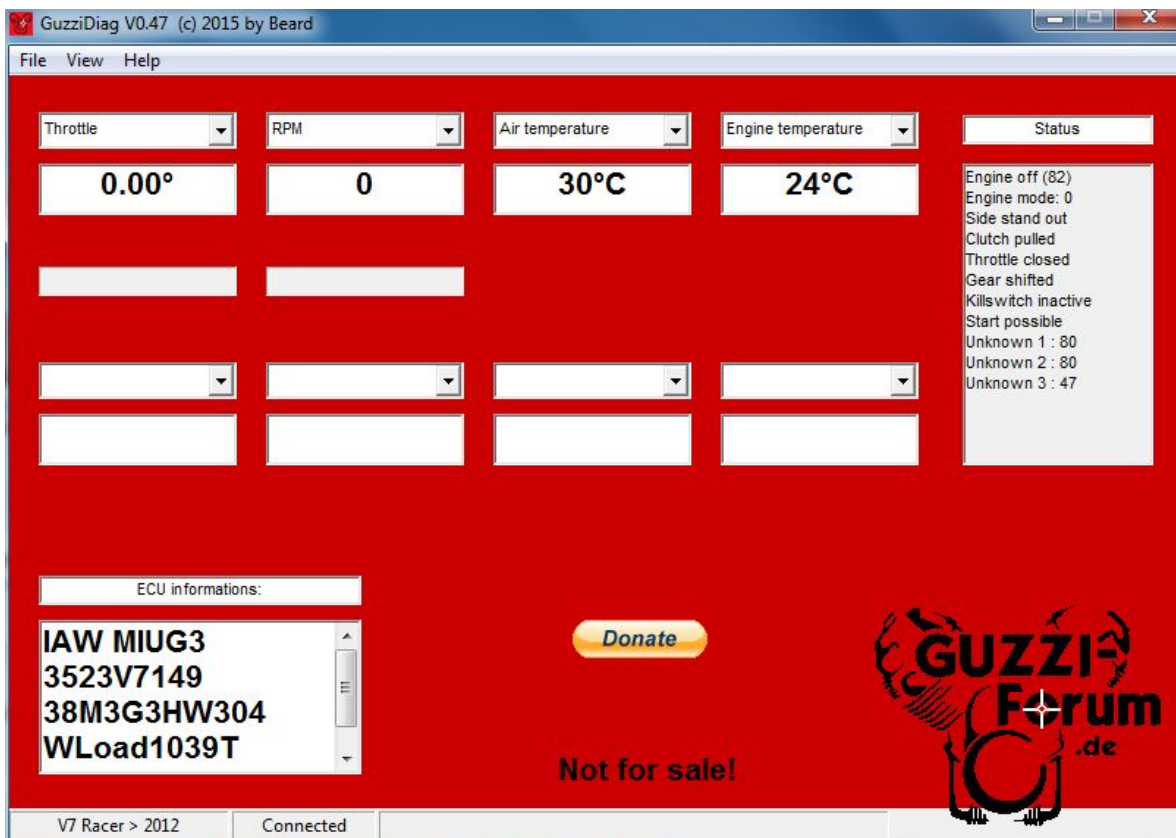
Run the GuzziDiag program. Select values to read from the drop down boxes. Here I have chosen 'Throttle', 'RPM', 'Air temperature' and 'Engine temperature'. When loading a new map, always make sure that 'Throttle' is in of the values'.



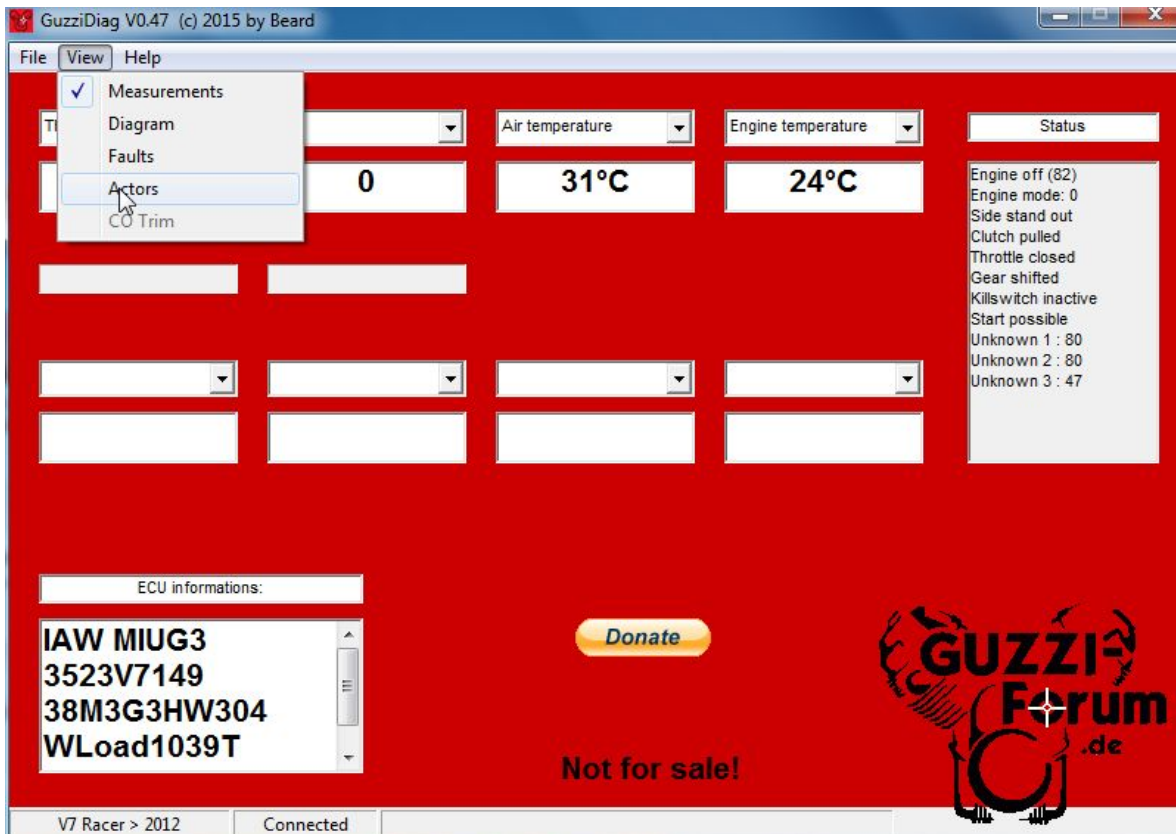
Connect to the ECU by clicking 'File' -> 'Connect'



Here, you can see that after loading a map, the throttle value is 0.00. For a V7, it should 0.9 - 1.0. For a V7II, 1.0 - 1.2. If your throttle value is within the range for your V7 model, you may skip this step and go straight to resetting the autolearning parameters.

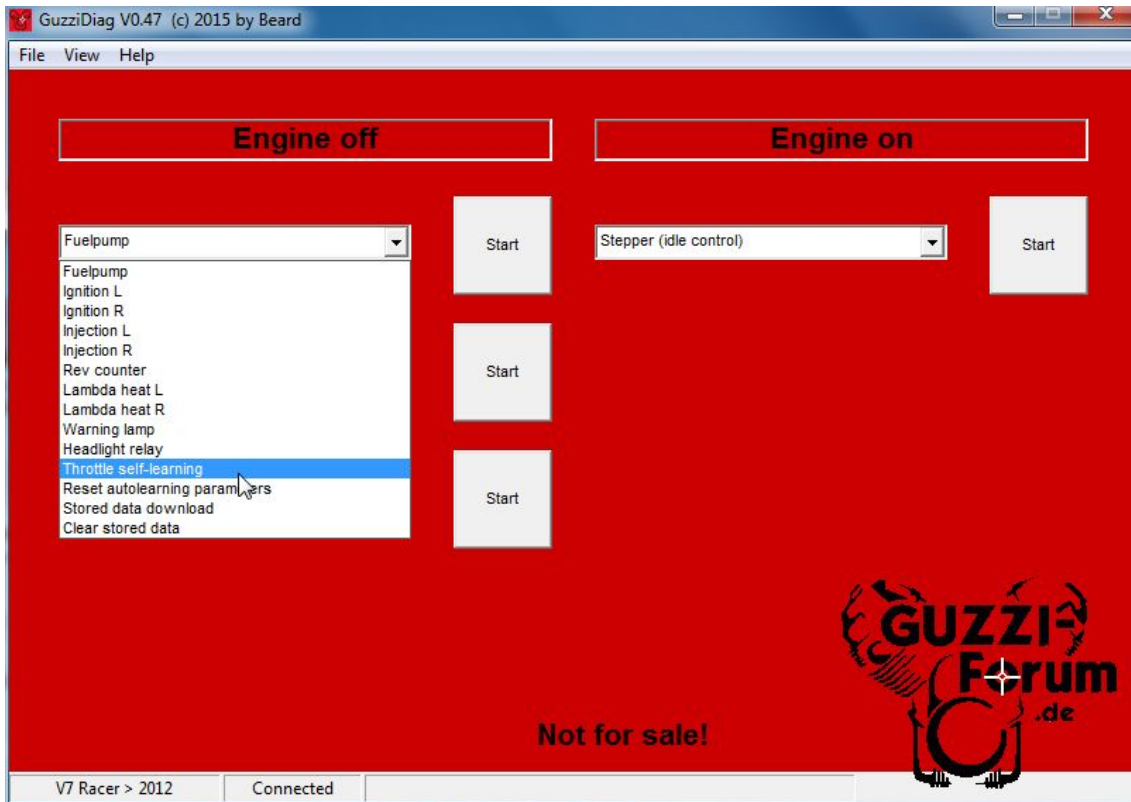


To 'relearn' the throttle. Click 'View' -> 'Actors'

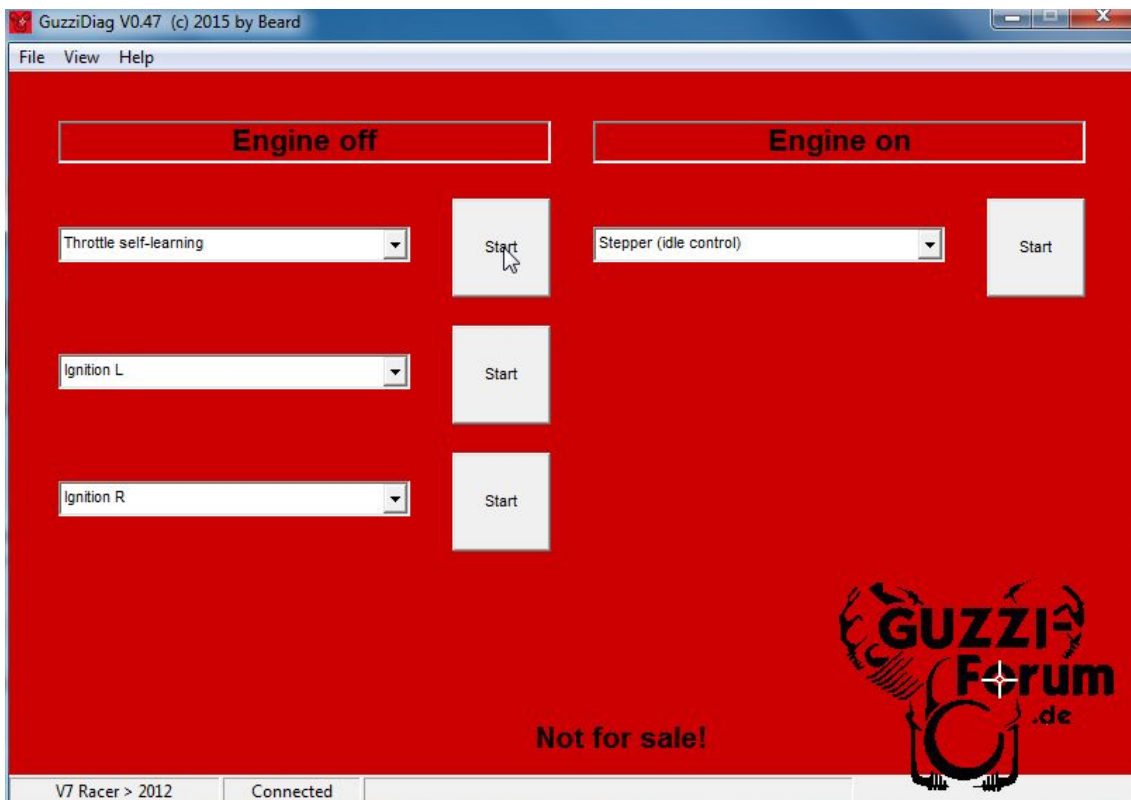


From the Actors menu, select on of the drop-down menu items.

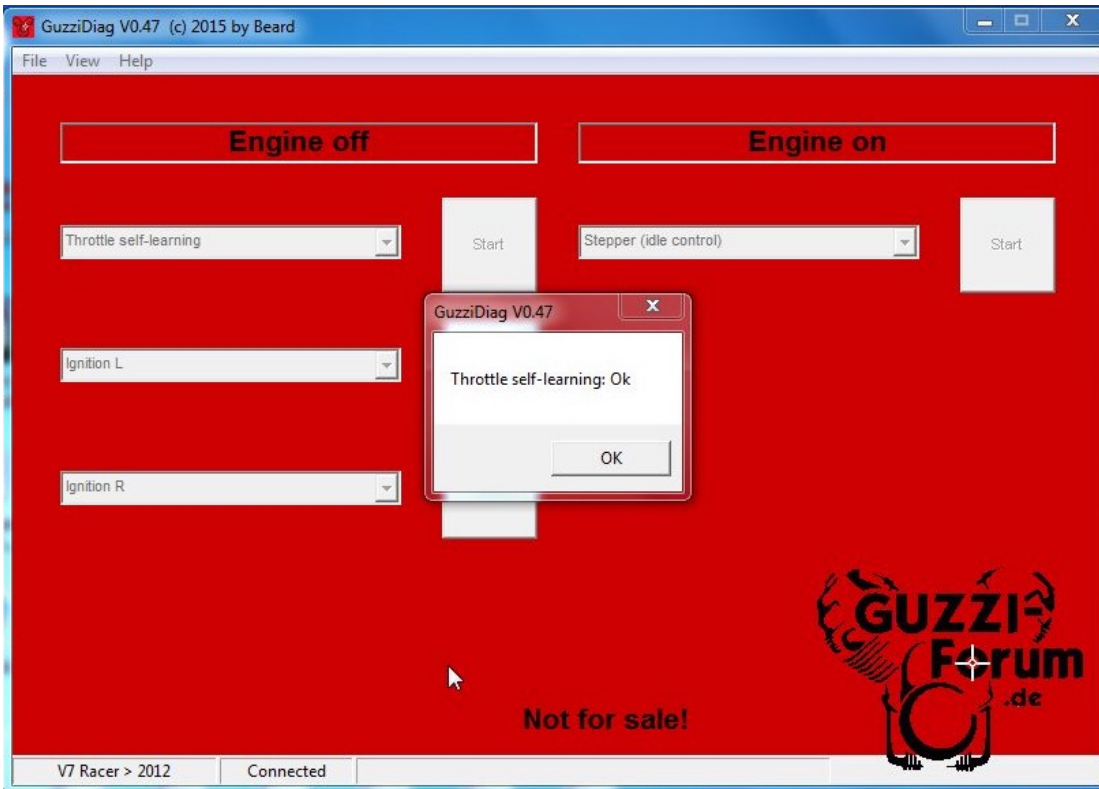
Select 'Throttle Self Learning'



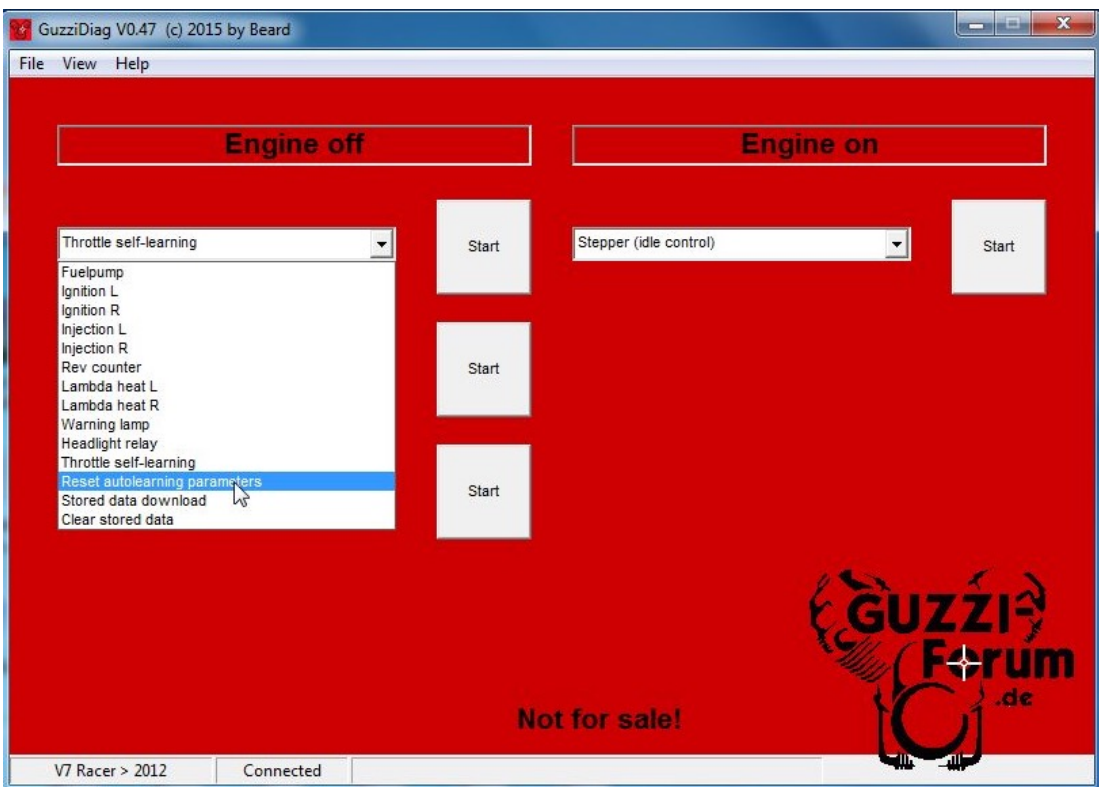
Next, click 'Start'

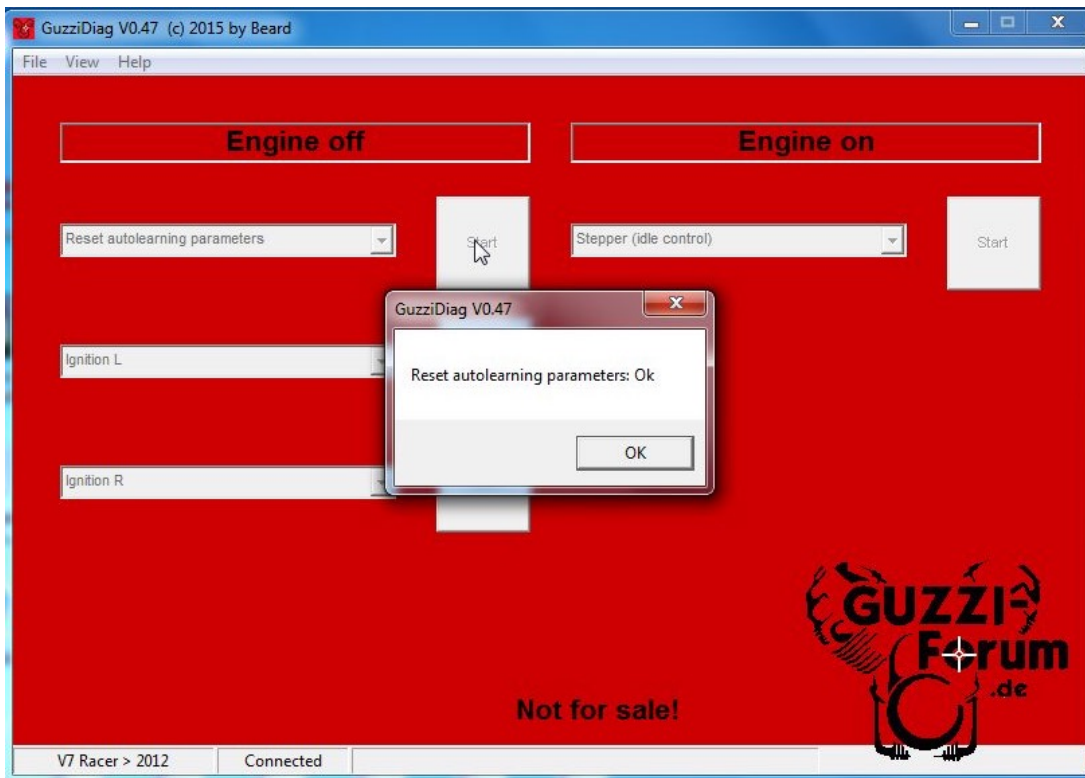


You will get confirmation. Click 'Ok'.

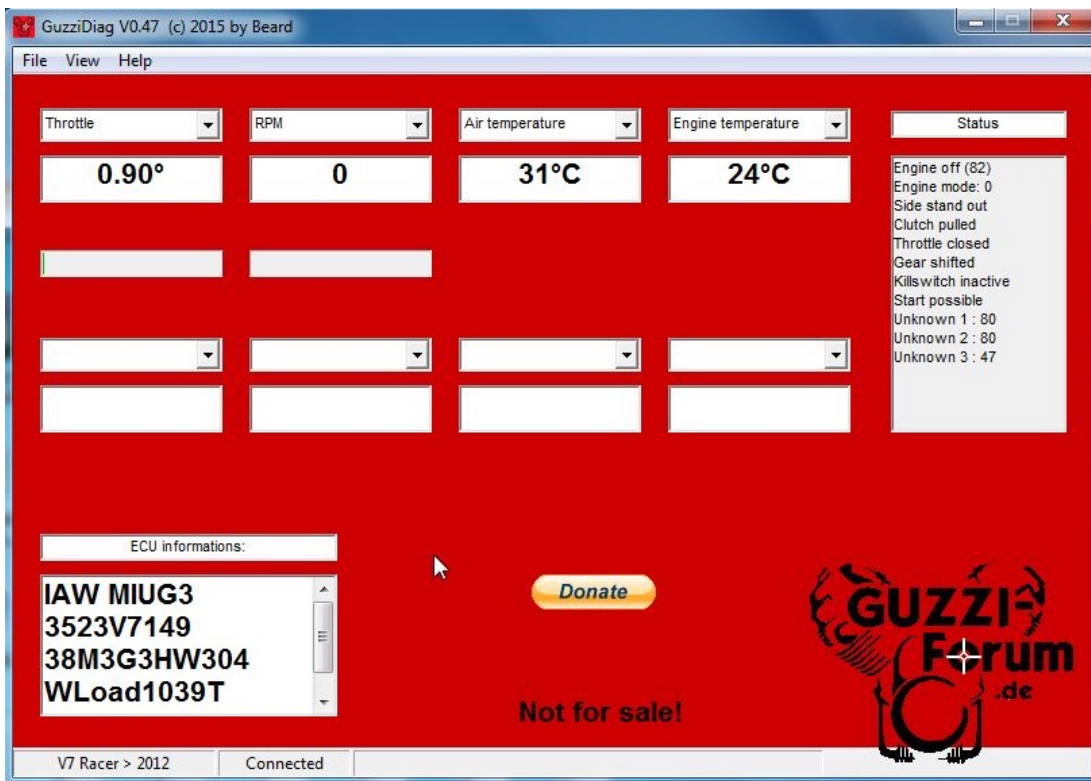


To reset the autolearning parameters, select 'Reset autolearning parameters' from the drop-down menu. Click 'Start', then 'Ok'.





Next, click 'View' -> 'Measurements' to return to the main menu. Throttle value now reads 0.9. Remember, for V7, it can 0.9 - 1.0. For V7II, 1.0 - 1.2.



Done!. Go ride!

